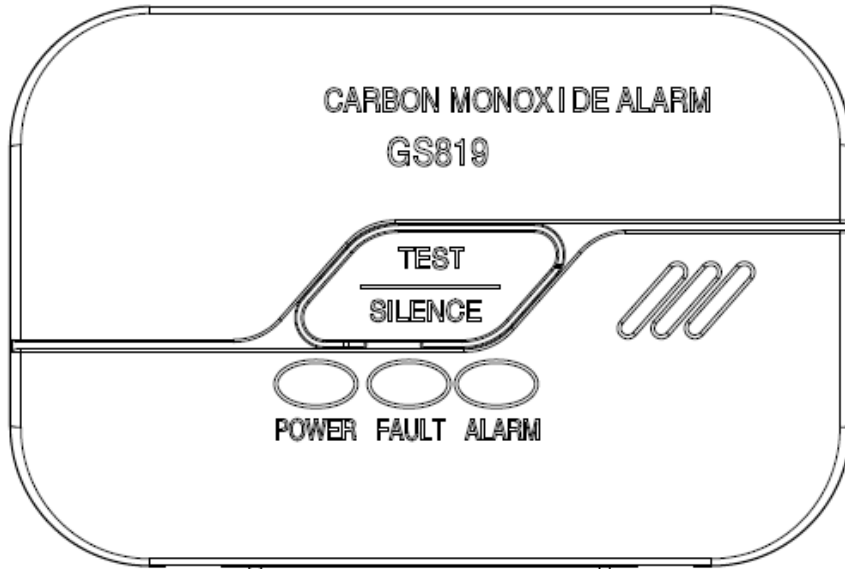




CARBON MONOXIDE ALARM USER'S MANUAL

MODEL No.: GS819



KM 616830



EN50291-1:2010 + A1:2012

Thank you for purchasing the **GS819** carbon monoxide (CO) alarm. This device is a product that has been built using state-of-the-art technology.

This user guide contains important information on starting operation and using the device. Store this user guide in a safe place for future reference. These instructions are a part of this product – bear this in mind if you pass on this product to others.

Please take a few minutes to thoroughly read the user’s guide and familiarize yourself and your family with its operation.

CAUTION:

This CO alarm is designed for indoor use only. DO not expose to rain or moisture. DO not knock or drop the detector. DO not open or tamper with the alarm as this could cause malfunction.

The alarm will not protect against the risk of carbon monoxide poisoning when the battery has drained.

Installation of the alarm should not be used as a substitute for proper installation, use and maintenance of fuel burning appliances including appropriate ventilation and exhaust systems.

Table of Contents

- 1. Installation instructions-----2/8
- 2. Product overview-----3/8
- 3. Understanding your CO alarm-----3/8
- 4. What to do if the alarm sounds-----4/8
- 5. Battery installation/replacement-----6/8
- 6. General maintenance-----6/8
- 7. Carbon monoxide overview-----7/8

8. Specification-----7/8

9. Manufacturer and Customer service information-----8/8

10. Warranty card-----8/8

11. Warranty Information-----8/8

1. Installation instructions

1.1 Installation location

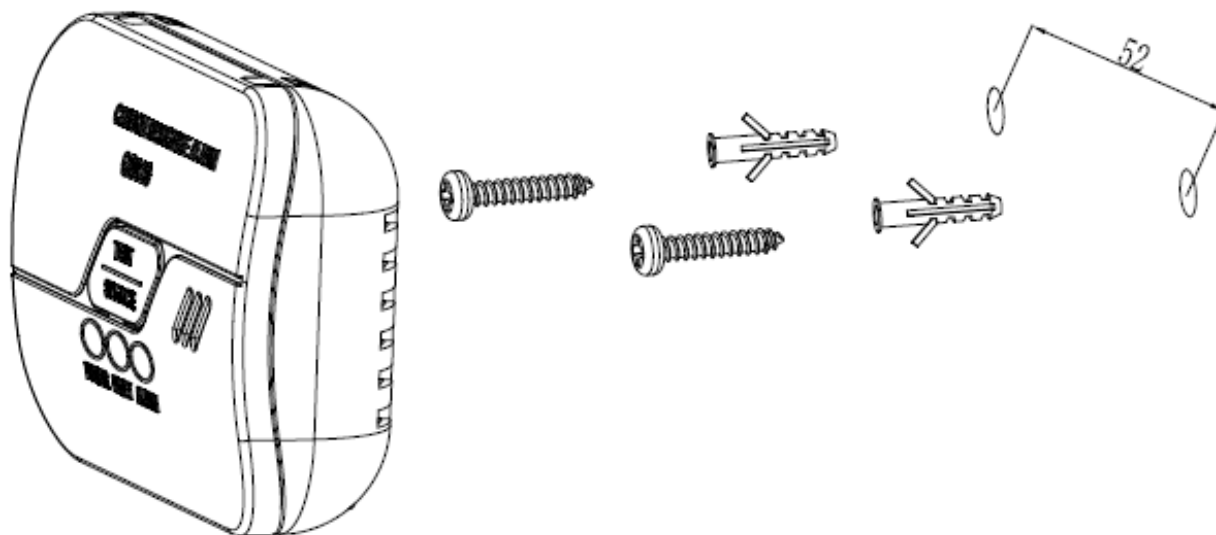
When choosing your installation locations, make sure you can hear the alarm from all sleeping areas. If you install only one CO alarm in your home, install the alarm near bedrooms, not in the basement or furnace room. The recommended position for the unit should be at least 1.8 meters (about 6 feet) above the floor level.

CAUTION: This alarm should be installed by a competent person.

1.2 Mounting step

- 1: Drilling two $\phi 5.0\text{mm}$ holes in the wall, the distance between two holes center is 52mm (2.0 inch) ,then inserting two plastic stopper provided into the holes.
- 2: Insert the two screws provided until the screw heads are approximately 5mm from wall.
- 3: Test the unit by using the **TEST/SILENCE** button. Ensure the unit sound is alarm pattern.
- 4: Hook the unit over the screws onto keyholes in back of unit.

As you install the battery on the unit, maybe it will sound for several minutes, then stop and enter in normal operation mode. If it always sounds, please call our agent.

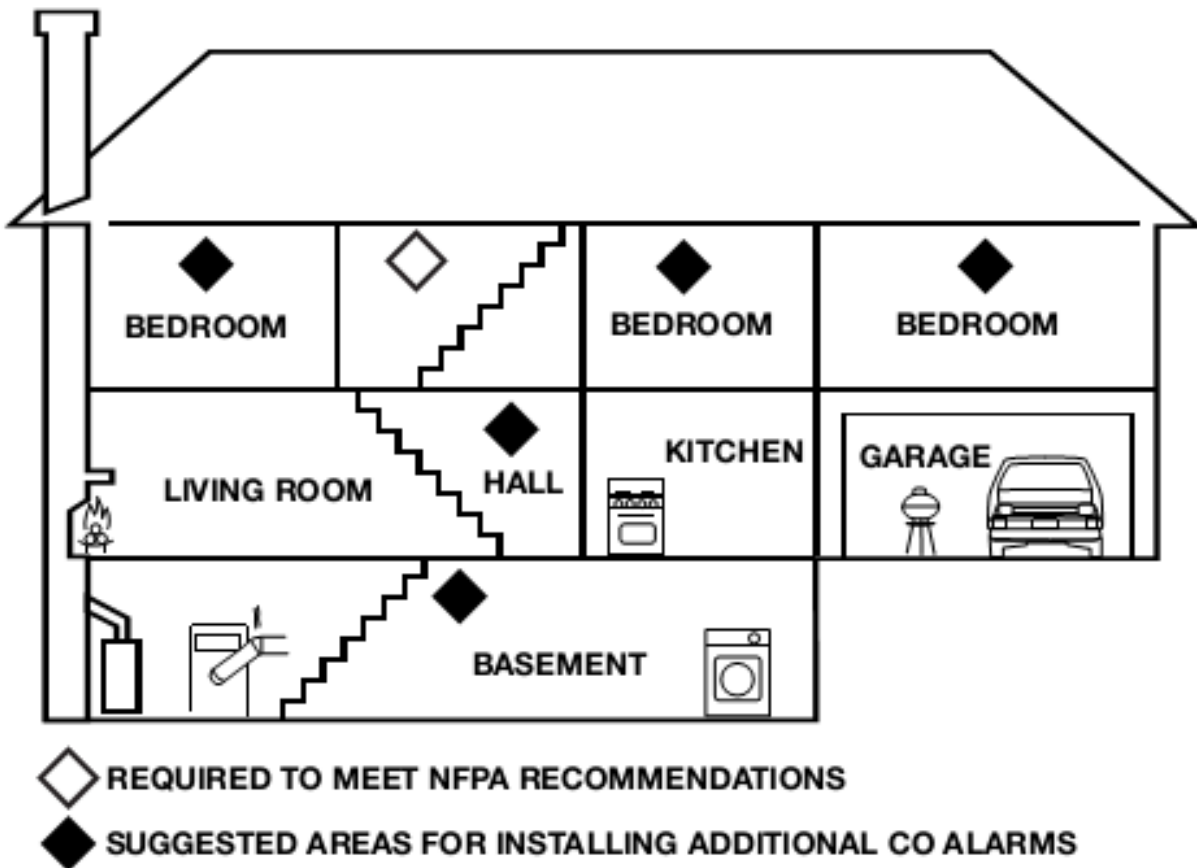


1.3 Recommended installation locations:

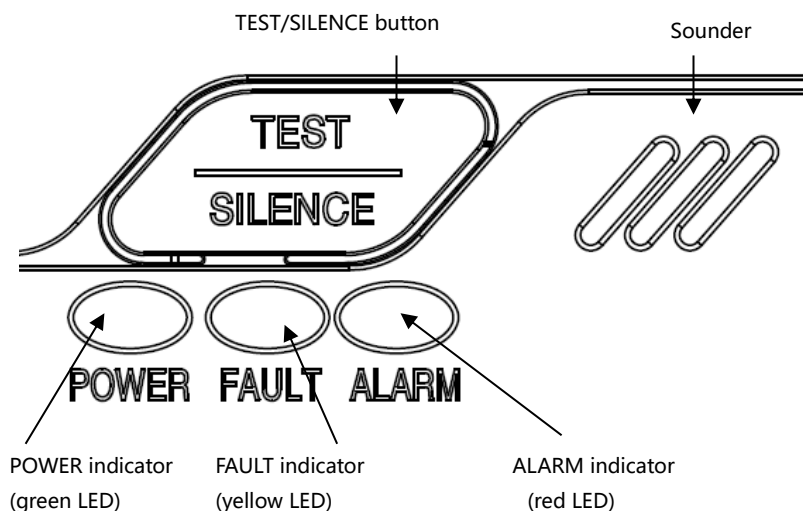
The following suggestions are intended to help you with the placement and installation of your CO alarm.

- Place out of the reach of children. Under no circumstance should children be allowed to handle the CO alarm.
- Install in a bedroom or hallway located close to the sleeping area. Take special care to verify the alarm can be heard in sleeping areas.
- It is recommended that a CO alarm be installed on each level of a multilevel home.
- Locate 1~3 meter (3.3~10feet) away from all fuel burning appliances.
- Placing at eye level allows for optimum monitoring of the red and green indicator lights.

- Insure that all vents of the unit are unobstructed.
- Do not install in dead air spaces such as peaks of vaulted ceilings, or gabled roofs.
- Do not install in turbulent air from ceiling fans.
- Do not place near fresh air vents or close to doors and windows that open to the outside.
- Keep the CO alarm away from excessively dusty, dirty, or greasy areas such as kitchens, garages and furnace rooms. Dust, grease and household chemicals can affect the sensor.
- Keep out of damp and humid areas such as the bath room. Avoid spraying aerosols near the CO alarm.
- Do not install in areas where the temperature is below -10°C or hotter than 40°C.
- Do not place behind curtains or furniture. CO must be able to reach the sensor for the unit to accurately detect CO.



2. Product overview



2.1 POWER indicator

The POWER indicator (green LED) is used to indicate power status of the CO alarm. The POWER indicator will flash every 30 seconds.

2.2 FAULT indicator

The FAULT indicator (yellow LED) is used to indicate fault or warning status of the CO alarm.

2.3 ALARM indicator

The ALARM indicator (red LED) is used to indicate alarm status of the CO alarm.

2.4 TEST/SILENCE button

The TEST/SILENCE button is used to test the unit and to silence the unit during alarm. Press and hold to enable TEST function, Or press and hold about 0.2 second then release to enable SILENCE function.

2.5 Alarm sounder

The alarm sounder is used to send out CO alarm warning and fault warning information.

3. Understanding your CO alarm:

3.1 Start up

After connecting the battery, all three LEDs light up briefly and the CO alarm confirms start-up with a beep.

After power on, 30 seconds before the green LED flash every 3 seconds, This is preheated state, 30 seconds later the green LED flashing every 30 seconds indicates the unit is functioning properly.

3.2 Normal operation

The POWER indicator (green LED) flashing every 30 seconds.

3.3 Fault warning

If the unit chirps once every 30 seconds, with FAULT indicator (yellow LED) will be flash. It indicates the CO alarm is in malfunction condition. That means your CO alarm has no detecting function and no respond CO.

Replace battery, if condition continues, the CO alarm has malfunctioned. Replace immediately. Please contact us to more service.

3.4 Low battery voltage warning

If the alarm chirps twice every 30 seconds, with FAULT indicator (yellow LED) will be flash. It indicates the battery is low.

NOTE: You need to replace the batteries immediately when the alarm enters this status.

NOTE: The alarm will not protect against the risk of carbon monoxide poisoning when the battery has drained.

NOTE: Refer to "5. Battery installation/replacement" when you hear the sounds of the low battery voltage warning.

3.5 Low battery voltage warning silence

When the alarm is under the low battery warning, pressing the TEST/SILENCE button, it will come into silence status for about 9 hours, and FAULT indicator (yellow LED) still keep flashing.

NOTE: When alarm under the low battery warning, please replace the battery in time to ensure the normal working.

3.6 End of life warning

If the alarm chirps 3 times every 30 seconds with FAULT indicator (yellow LED) flash. It indicates end of life of the CO alarm. You need to immediately replace the CO alarm.

3.7 CO alarm warning

When the alarm detects a dangerous level of CO, the alarm will emit a loud alarm pattern. The alarm signal pattern is 4 quick beeps followed by 5 seconds of silence. This cycle repeats as long as a dangerous CO condition exists. The red alarm LED will flash the same pattern.

This signal will be repeated until the alarm resets after dissipation of CO or the alarm signal is manually silenced.

NOTE: Refer to "4. What to do if the alarm sounds" when you hear the sounds of the CO alarm warning.

3.8 CO alarm warning silence

If the alarm is under the CO alarm warning, enable the TEST/SILENCE button, it will come into silence status for 5 minutes, and ALARM indicator (red LED) still keep flashing.

NOTE: The alarm signal will be reenergized within 6 minutes from the time the TEST/SILENCE button is operated if the concentration of CO surrounding the alarm remains at 45ppm or greater.

3.9 human alarm sounds

If the alarm comes into the status of CO alarm warning, the alarm will start in a lower alarm volume (<85dB) for around 10 seconds, then issuing a normal alarm volume (>85dB). It will avoid people to be scared suddenly by a loudness alarm sound.

3.10 Test the unit

To test the alarm, press and hold TEST/SILENCE button, you should hear alarm sound patterns and with a corresponding ALARM indicator (red LED) flash. The alarm sound patterns will stop when release TEST/SILENCE button.

The test alarm sound pattern includes: 4 short beeps, 5 seconds pause, repeat the pattern until release TEST/SILENCE button.

NOTE: After the TEST/SILENCE button is enabled, the alarm sounds and the red alarm light flashes. This does not indicate that CO is present.

NOTE: Test the unit weekly! If at any time your unit does not perform as described, replace it immediately.

NOTE: The function of human alarm sounds will be enabled for button test. Please press and hold test button more than 10 seconds, the alarm will issue a normal alarm volume (>85dB).

4. What to do if the alarm sounds

WARNING! –Actuation of your CO alarm indicates the presence of Carbon Monoxide (CO) which can KILL YOU.

WARNING! –Action of this device indicates the presence of dangerous levels of CO! CO can be fatal! If the alarm sounds:

1. Operate the TEST/SILENCE button.
2. Shut down furnaces and gas supply.
3. Immediately move to fresh air outdoor or by an open door/window. Do a head count to check that all persons are accounted. Do not reenter the premises nor move away from the open door/window until the emergency services responders have arrived, the premises have been aired out, and your alarm remains in its normal condition.
4. After following steps 1-3, if your alarm reactivates within a 24 hour period, repeat steps 1-3 and call a qualified appliance technician to investigate for sources of CO from fuel burning equipment and appliances and inspect for proper operation of this equipment. If problems are identified during this inspection, have the equipment serviced immediately. Note any combustion equipment not inspected by the technician and consult the manufacturer's instructions or contact the manufacturer directly for more information about CO safety and this equipment. Make sure that motor vehicles are not or have not been operating in an attached garage or adjacent to the residence.

5. Battery installation/replacement

Twice chirps with corresponding FAULT indicator (yellow LED) flashing twice every 30 seconds indicates that the battery is low battery,

you must to replace the battery with battery specified, please see "8. Specification "

To install or replace the battery in unit, please perform the following steps:

- 5.1 Take down the unit from screw heads of the wall.
- 5.2 Open battery compartment.
- 5.3 Remove the old battery, and replaced by new battery.
- 5.4 Close battery compartment.
- 5.5 Hook the alarm body over the screw heads onto keyholes in back of the unit.
- 5.6 Test alarm using the TEST/SILENCE button, if the testing alarm is ok, means the product can work normally.

WARNING! Use only the battery specified. Use of different battery may have a detrimental effect on the CO alarm. A good safety measure is to replace the battery at least once a year.

NOTE: Reinstall immediately after cleaning and then test unit using the TEST/SILENCE button!

6. General maintenance:

To keep your CO alarm in good working order, please follow these simple steps:

- 6.1 Verify the unit's alarm sound and indicators operation by enable the TEST/SILENCE button once a week.
- 6.2 Remove the unit from the wall and clean the alarm cover and vents with a soft brush attachment once a month to remove dust and dirt.
- 6.3 Never use detergents or other solvents to clean the unit.
- 6.4 Avoid spraying air fresheners, hair spray, or other aerosols near the CO alarm.
- 6.5 Do not paint the unit. Paint will seal the vents and interfere with the sensor's ability to detect CO. Never attempt to disassemble the unit or clean inside. This action will void your warranty.
- 6.6 As soon as possible, place the CO alarm back in its proper location to assure continuous protection from carbon monoxide poisoning.
- 6.7 When household cleaning supplies or similar contaminants are used, the area should be ventilated.

WARNING: The following substances can affect the sensor and may cause false actions: methane, propane, isobutene, isopropanol, ethylene, benzene, toluene, ethyl acetate, hydrogen sulfide, sulfur dioxides, alcohol based products, paints, thinner, solvents, adhesives, hair sprays, after shaves ,perfumes and some cleaning agents.

WARNING: Your CO alarm will not be operational and will not monitor for CO levels without battery.

WARNING: This apparatus is designed to protect individuals from the acute effects of carbon monoxide exposure. It will not fully safeguard individuals with specific medical conditions. If in doubt consult a medical practitioner.

7. Carbon monoxide (CO) overview:

CO cannot be seen, smelled or tasted and can be fatal. The build up of CO in the blood is called the carboxyhemoglobin (COHb) level and interferes with the body's ability to supply itself with oxygen. Depending on the concentration, CO can kill in minutes.

The most common sources of CO are malfunctioning gas appliance used for heating and cooking ,vehicles running in an attached garage, blocked chimneys or flues, portable fuel burning heaters, fireplaces, fuel powered tools and operating a grill in an enclosed space.

Indications of carbon monoxide poisoning include symptoms similar to the flu, but with no fever. Other symptoms include dizziness, fatigue, weakness, headache, nausea, vomiting, sleepiness and confusion. Everyone is susceptible to the danger of CO, but experts agree that unborn babies, small children, pregnant women, senior citizens and people with heart or respiratory problems are at the highest risk for serious injury or death. Every year a qualified technician should inspect and clean your heating system, vents, chimney, and flues.

The following symptoms are related to CARBON MONOXIDE POISONING and should be discussed with ALL members of the household:

7.1 Mild Exposure: Slight headache, nausea, vomiting, fatigue (often described as "Flu-like" symptoms).

7.2 Medium Exposure: Severe throbbing headache, drowsiness, fast heart rate.

7.3 Extreme Exposure: Unconsciousness, cardiorespiratory failure, death.

The above levels of exposure relate to healthy adults. Levels differ for those at high risk. Exposure to high levels of carbon monoxide can be fatal or cause permanent damage and disabilities. Many cases of reported carbon monoxide poisoning indicate that while victims are aware they are not well, they become so disoriented they are unable to save themselves by either exiting the building, or calling for assistance. Also, young children and household pets may be the first effected. Familiarization with the effects of each level is important.

WARNING!-Exposure to high levels of carbon monoxide can be fatal or cause permanent damage and disabilities.

8. Specification:

Model: GS819

Type of apparatus: Type B

Power Supply: DC 3V(2pcs alkaline battery)

Recommend battery type: GP GN15A/ Raymax LR6

Sensor Type: Electrochemical

Product life: 10 years after initial power up

Sensitivity Setting: Conforms to EN 50291-1:2010+A1:2012 standard.

30PPM	Without alarm before 120 minutes
50PPM	Between 60 to 90 minutes
100PPM	Between 10 to 40 minutes
300PPM	Less than 3 minutes

Standby Current: <50 μ A (average)

Alarm Current: <25mA (average)

Operation Ambient Condition: -10~+40°C, 30~95%RH non-condensing

Storage/Transport Ambient Condition: -20~+50°C, 10~95% RHnon-condensing

Alarm sound : \geq 85DB at 100cm @3.2 \pm 0.5KHz pulsing alarm

CO alarm silence: about 5 minutes

Low Battery warning silence: about 9 hours

NOTE: This CO alarm is designed to detect carbon monoxide gas from any source of combustion. It is not designed to detect any other gas.

9. Manufacturer and customer service information:

NINGBO SITERWELL ELECTRONICS CO., LTD

ADDRESS: NO.76 HAICHUAN ROAD, CHUANGYE ZONE B, JIANGBEI, NINGBO, CHINA

TEL: 0086-574-83076656 FAX: 0086-574-83076652 E-MAIL: Sales@china-siter.com

11. Warranty Information

THREE YEARS LIMITED WARRANTY

Dear customer,

Our products are subject to strict quality controls. However, if this device should unexpectedly not function perfectly, please contact the customer services address given on warranty service information. This is the only way for you to be able to return your device or have it picked up free.

The warranty period is 36 months and begins on the day of purchase.

Please always keep your till receipt as proof of purchase. Warranty claims can only be made for possible defects

caused by material and production faults.

During the warranty period, defective devices can be sent to the service address given overleaf for you (post paid). You will then receive a new or repaired device back free. After the warranty period has expired you still have the possibility of sending the defective device for repair to the address given overleaf. Repairs carried out after the warranty period must be paid for.

In the event of misuse or improper treatment, use of force or intervention not carried out by our authorized service branches, the warranty is no longer valid. This warranty does not restrict your legal rights.

NOTE: In the event of a warranty claim, please return the till receipt and completed warranty card with fault description together with the defective device.

NOTE: The warranty does cover the batteries supplied.

Country of Origin: China

Importer & Distributor: GLOBAL Export – Import LTD. H-1151 Budapest Szekely E u. 11.

www.global-export-import.eu