






DF-629TS-3.5

USER MANUAL

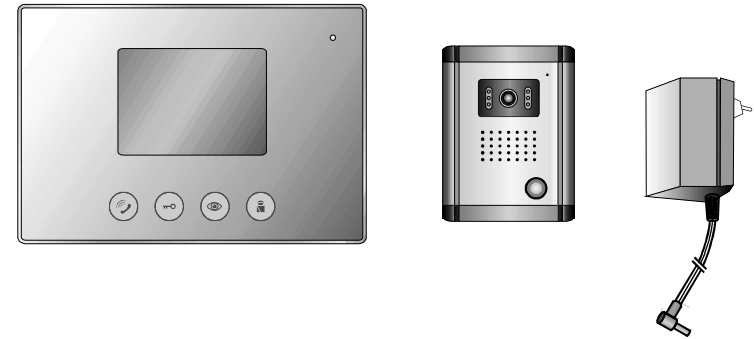
Safety & Cautions

-  1. To Prevent Electrical shock do not open the cover of the device for non-professional people. In case inspection and repairing is needed, please contact our dealer or our service team.
-  2. The device shall be installed in the place with good ventilation, dry and clean, no direct sun lights.
-  3. Do not use any chemical to clean the device, use the clean and dry soft cloth instead.

Technical Specification

1. Input Signal Level: 1.0Vpp
2. Input Impedance: 75 Ω
3. Brightness Test Grade: >Leve17
4. Camera: Color C-MOS
5. Night View Illumination required 0.1 Lux
6. Cable information: 4X0.75mm² for 1-25m; 4X1.5mm² for up to 100m
7. Extension Numbers and Cable Specification: Total 2 Extension Monitors can be connected parallel to one outdoor station. Max Distance between outdoor camera and monitor is 30m by 4X0.75mm² cable. Due to Extension monitor will cause decay of video signal, we strongly suggest to use coaxial cable when there is extension monitor or distance more than 30m to get better picture quality.
8. Camera resolution: 380 TV Lines
Monitor resolution: 420 TV Lines
9. Duration for Monitor displaying:
 - A. Calling without answer: 30s
 - B. Press viewing button: 2minutes
 - C. Intercom: 90s
 - D. Press Alarm button: 2minutes
10. Night Viewing Source: IR Lings
11. Wires Connection: 4-wires, Max Distance between Monitor and outdoor station: 100m (>50m use Video Coxial cable)
12. Camera Lens Viewing Angle: 92°
13. Power Source: Monitor: +15VDC through adaptor(230VAC input, 15VDC output)
14. Monitor Measurement: 161x111x18mm
Outdoor Camera Measurement: 134x100x45mm
15. Monitor Weight: 250g Outdoor Camera: 200g
16. Operation Temperation: -20°C+55°C

General Description

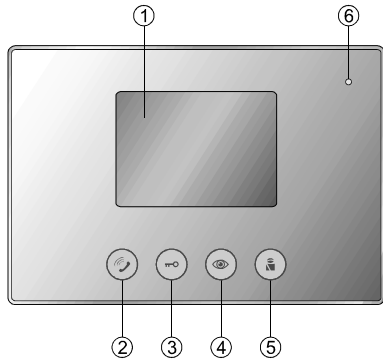


DF-629TS-3.5+OUT9 is a new designed hand-free color video door phone with 3.5" TFT LCD screen. you only need to touch the function button on the screen to operate the Unit. Touch the viewing button to see the visitors, touch the key symbol to release the lock, touch intercom symbol to have bi-directional talkback... In nights cameras shooting with infrared assisting, but due to TFT LCD screen's feature you can not see clear picture in night or low lights area. The products adopts attractive appearance, practical and reliable, easy installation, convenient in using, it can be widely used in various entrance guard burglar-proof monitoring systems, it is the most ideal equipment for modern families, entrance guard.

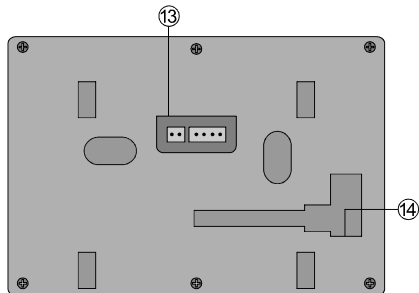
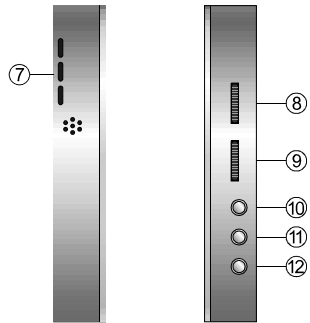
Please spend a little time to read this manual and you will know well the operation and adjustment of this device, and enable to make good use of it.

Description of Each Parts

Monitor

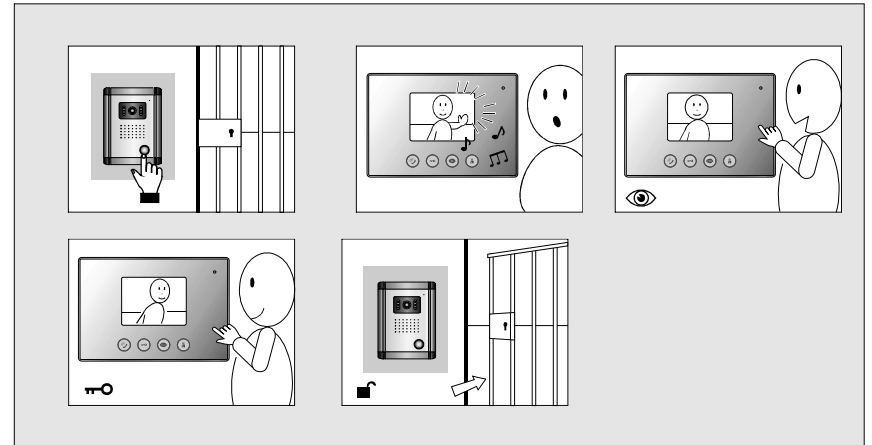


1. 3.5" TFT LCD Screen
2. Talk
3. Lock-opening
4. View
5. Alarm
6. Micro-phone




13. Lock audio
+12VDC ground
VIDEO
14. DC input


Operation Instructions




1. When visitors touch the chime button:

A. The monitor will chime and the visitors will be displayed on the screen.

B. You can touch the button  to talk to the visitors.

2. If you touch the button  and start intercom, it can last maximum 90 seconds, if you do not answer the call, the monitor will shut off automatically after 30 seconds; if you allow the visitor entrance, touch the door lock lease button to open the door.

3. You can also touch the viewing button  to monitoring the situation around the door station, after 2 minutes, it will shut off.

4. Adjust the Volume tone to adjust the volume of the ring;

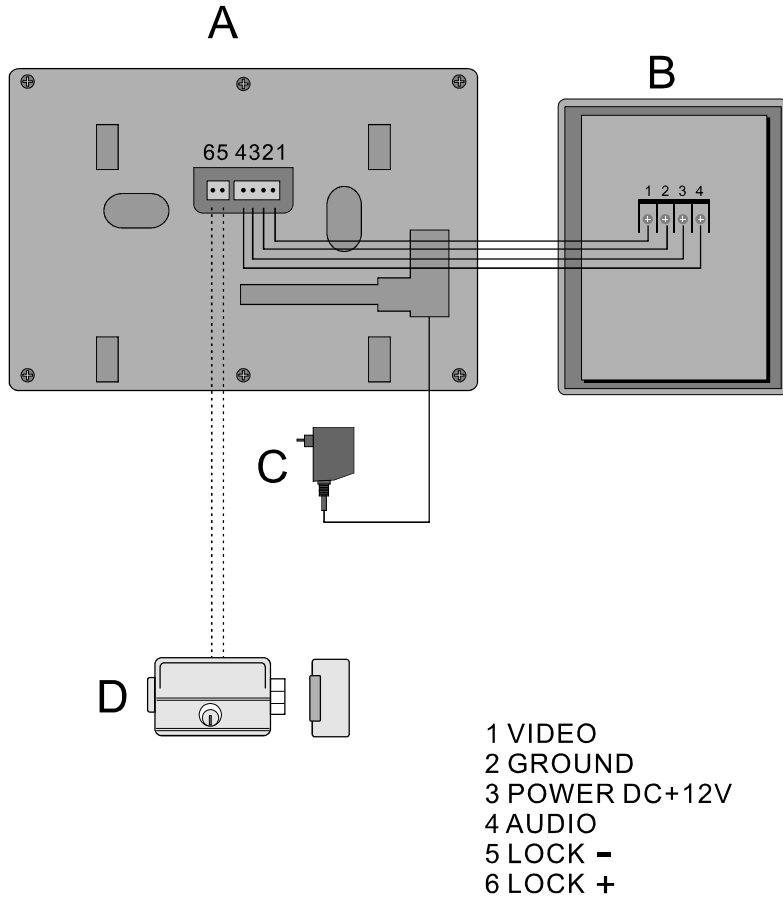
Adjust the Brightness tone to adjust the brightness;

Adjust the Contrast to get your satisfied color.

5. Press the Alarm Button to send out alarm sound.

6. As the outdoor camera was installed IR LED, it can help to see better picture in lower illumination.

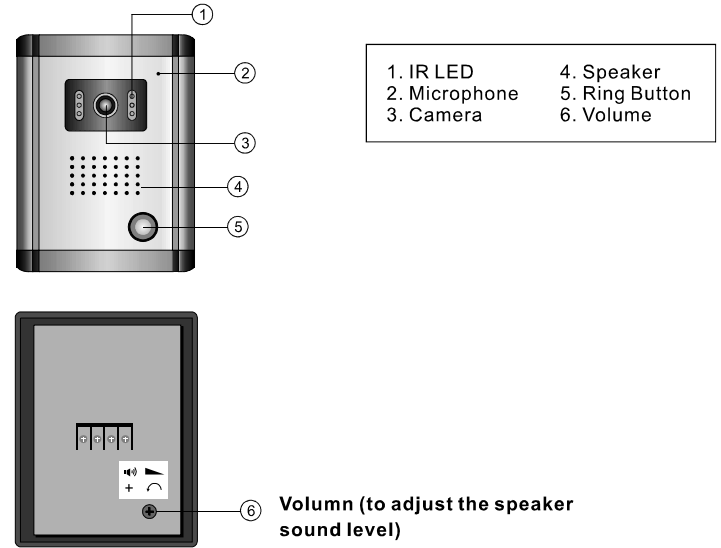
DF-629TS-3.5 Wiring Diagram



- A. DF-629TS-3.5 INDOOR MONITOR
- B. OUT9 OUTDOOR CAMERA
- C. POWER ADAPTOR
- D. ELECTRICAL LOCK

Description of Each Parts

Camera



Remark:

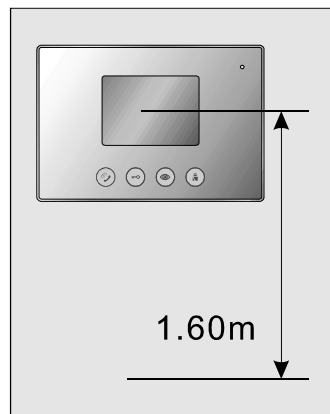
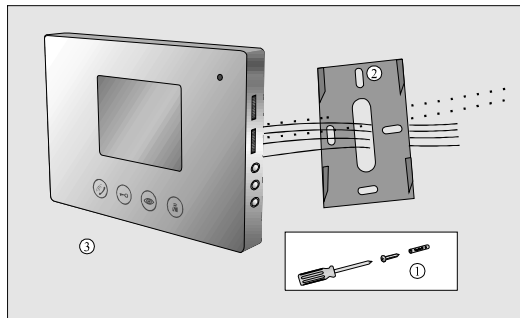
Please pay attention to the right connection port according to the wiring diagram, when connect the outdoor station to the indoor monitor, as well as connecting the electrical lock.

Installation & Cautions

Installation of Monitor:

1. Fixing the installation steel panel for the monitor on the right position on the wall by using expansion screws
2. Connecting the wires and Power at the back of Monitor;
3. Fixing the indoor monitor on the steel panel.

! Do not expose the screen where in direct sun lights, to protect the TFT LCD screen and avoid poor viewing result.
Recommended Installation Height of the Monitor: 1.6M.



Installation & Caution

Outdoor Station Installation:

1. Make a hole in the wall according to the size of the fixing plastic box (embedding box)
2. Penetrate the wires through the plastic box and fix the box in the hole.
3. Take out the fixing parts of the outdoor camera
4. Screw on the outdoor camera with the embedding box (do not forget the water-proof rubber membrane between the camera and the embedding box)
5. Fix back the plastic fixing parts.

! The outdoor station shall be installed where there is protection for direct sun lights and rain
Recommended installation height is 1.6M.

