



Quick Guide

P2P IP Cameras

ART. NO. CR728W



This Quick Guide is to help you set up your IP camera in a basic manner. Please see the Complete User Manual in included CD for more detailed instructions.

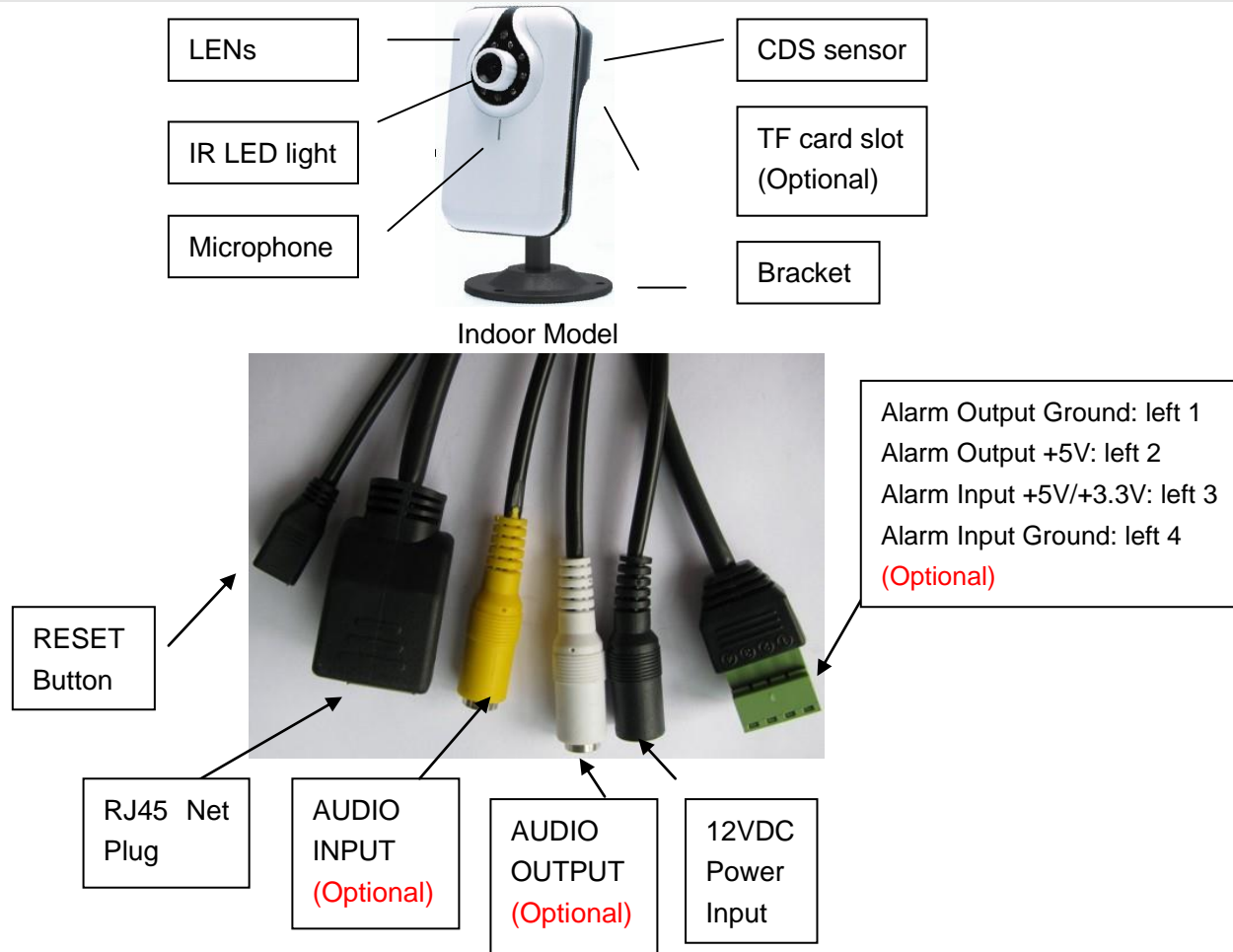
THANK YOU FOR YOUR PURCHASING OUR PRODUCT

<http://www.global-export-import.eu>

PRODUCT SPECIFICATIONS

Model NO.	CR728W
Image Sensor	1/6" Color CMOS Sensor
Compression	MJPEG simple stream
Resolution	VGA (640*480) /QVGA (320*240) optional
TF Card Record	Support Max. 32GB
Lens	Fixed 4mm
Mini Sensitivity	0Lux (IR ON) / 0.5Lux (Normal)
IR LED Lights	8 × Φ 3
Night vision distance	maximum 10 meters
Frame	0-30fps
Video parameters	Saturation, brightness, contrast, sharpness and adjustable
Support protocol	TCP/IP、UDP/IP、HTTP、SMTP、FTP、DHCP、DDNS、UPNP、NTP、PPPOE
WiFi protocol	IEEE 802.11b/g/n
Digital zoom	Support 4 times digital zoom
Motion detection	Support
Alarm action	Email/FTP/ server to send information to alarm
User settings	Three levels of user rights
Upgrade	Through the network of remote upgrade
Reset	Intelligent self repair function
Audio Input	Built-in Microphone
Power supply	DC 5V 2A
Working temperature	-10°C~ 50°C
Support OS	Windows and Macbook
Support Mobile System	iPhone and Android Smartphone

1. Product Appearance



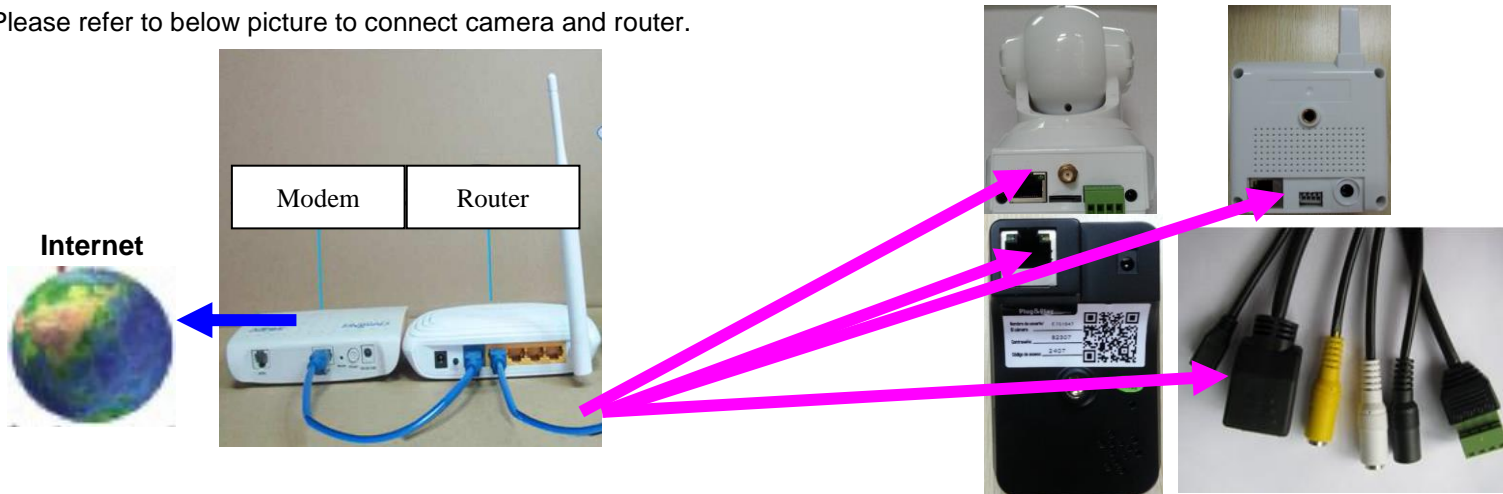
2. Package Included

Outdoor Model, Outdoor dome model and Outdoor Pan/tilt/zoom model

1 * IP camera, 1 * quick guide manual, 1 * net cable, 1 * screws bag, 1 * CD (with complete manual and PC client), 1* power supply,
1 * bracket (Not for outdoor dome model), 1 * antenna (For indoor Pan/Tilt model, Outdoor model and Outdoor Pan/Tilt/Zoom model only.)

3. Hardware Connection

Please refer to below picture to connect camera and router.




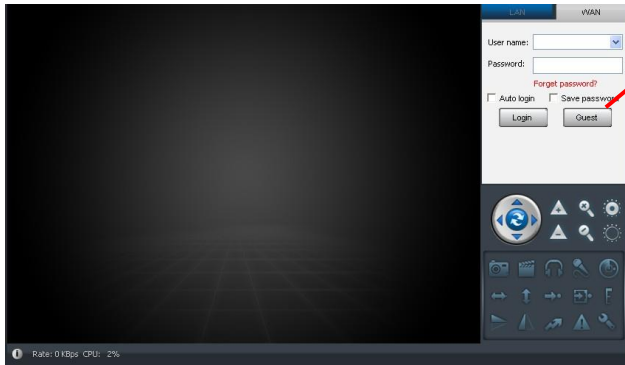
4. View from Computer Client

For Windows, insert CD and double click  to install Windows Client software.

If you are outside without the CD, or your PC Client is old version, go to www.myp2pcam.com and click  to download the newest version Windows client.

For MAC, go to www.myp2pcam.com and click  to download newest version MAC Client software.

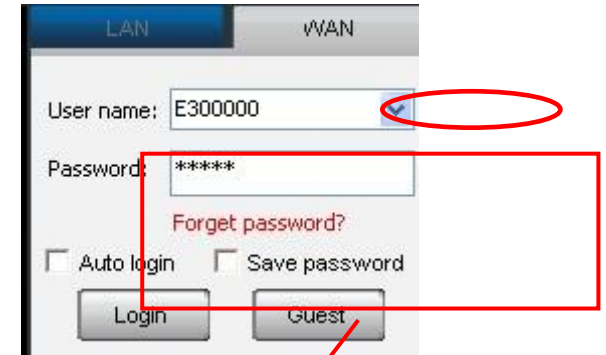
Then double-click software icon  to enter software interface and click "WAN" button (Picture 1). Generally speaking, at the bottom of every camera device or on the box it has a sticker that we have registered for you a user name and a default password already (Picture 2). Enter your "User Name" and "Password", click "Login" button to sign in the internet (Picture 3).



(Picture 1)

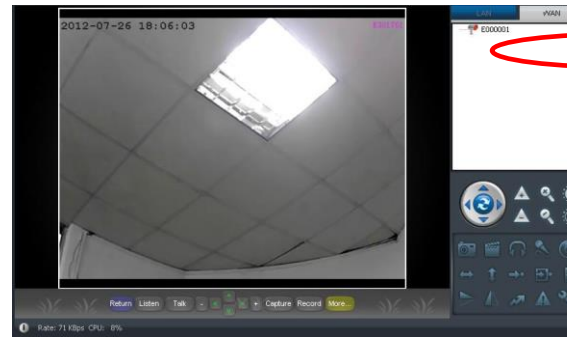


(Picture 2)



(Picture 3)

Secondly, double click the camera ID of the WAN for monitoring. (Picture 4).



(Picture 4)



Blue shows the camera is online.



Red shows the video is being monitored.



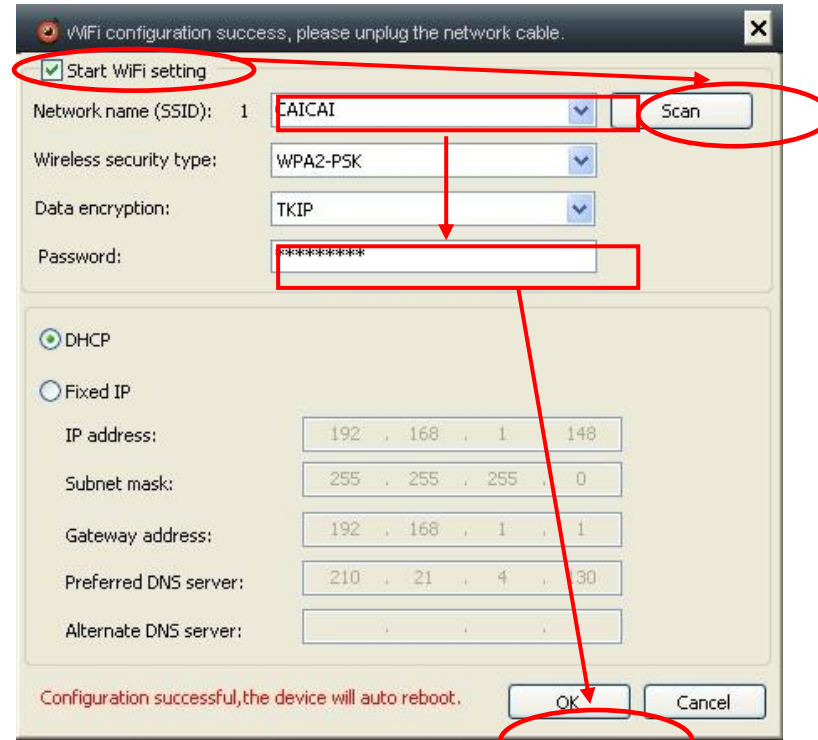
Grey shows the camera is offline.

5. WIFI Setup

Enter software interface and click "LAN" button and click the "set up wireless button" (Picture 5). Then tick "Start WiFi setting" and press "Scan" button to see all the WIFI networks nearby. Select the "Network name (SSID)" and input the WIFI password then press "OK" button. Then remove the net cable the camera will reboot and WIFI connected.



(Picture 5)

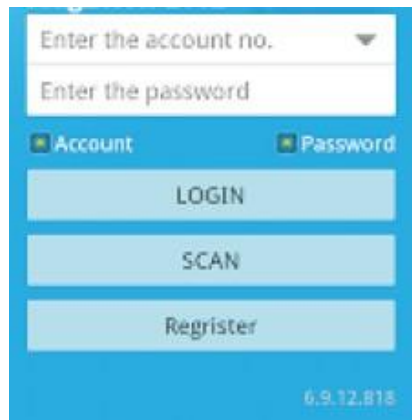


(Picture 6)

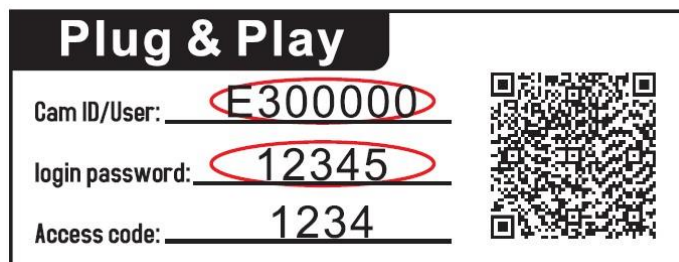
6. View from Mobile Phone



- 1) Search app keyword "**MyP2PCam**" on **PlayStore or AppleStore** to download app **MyP2PCam** and installed on your Android Phone or iPhone.
- 2) Open the app in your phone. Press "SCAN" button to scan the barcode on the camera to login. Or enter your "User Name" and "Password" on the camera and click "Login" button (Picture 7).
- 3) Press the camera ID to view video (Picture 8).



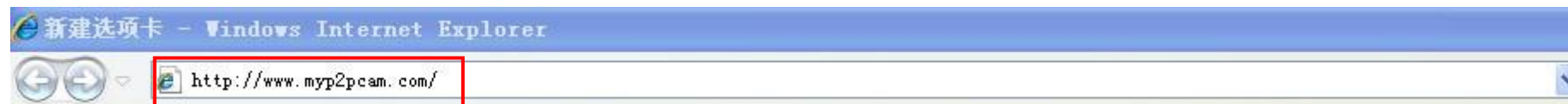
(Picture 7)



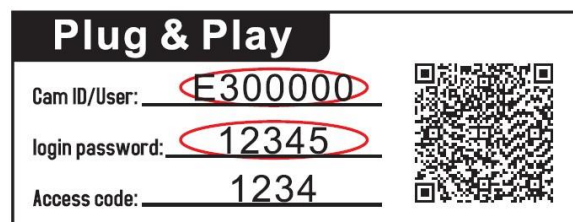
(Picture 8)

7. View from Browser (For IE and FireFox browser only)

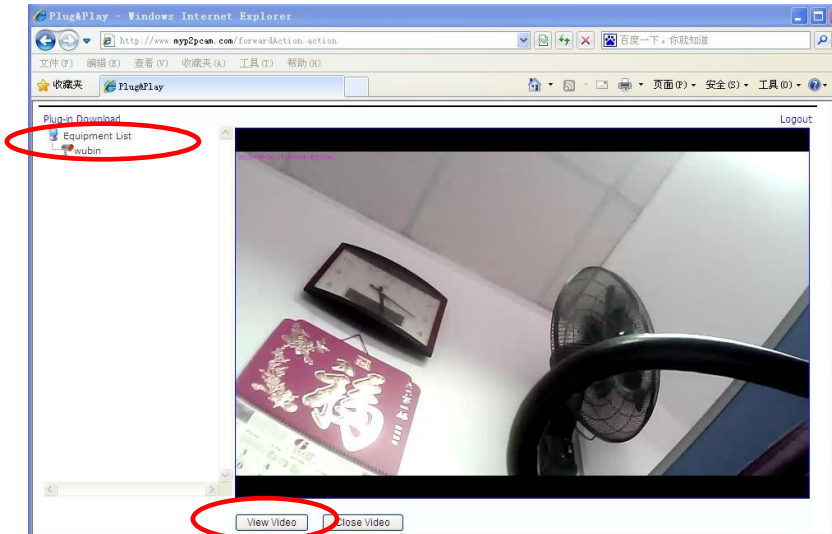
1) Input www.myp2pcam.com on your browser. For FireFox browser, Click "How to make firefox to support OCX plugin" to setup.



2) Enter your "User Name" and "Password" on the camera and select your language, then click "Login" button to login.



3) Allow to run the ActiveX. Click "View Video" button to view video.

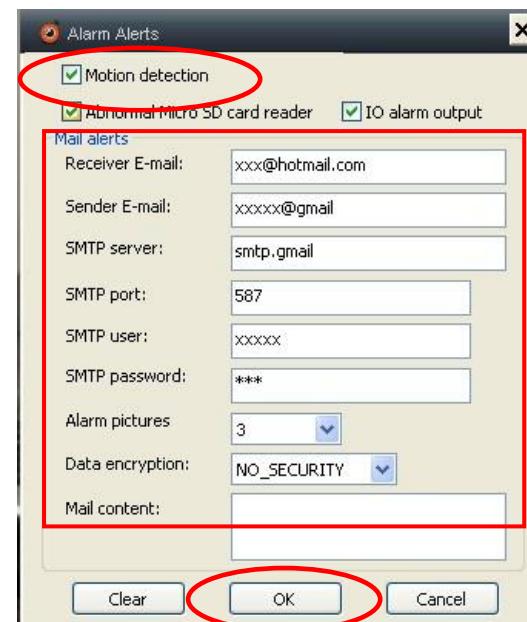


8. Email Alert

Enter software interface and click "LAN" button, right click the camera icon and select "Alarm Alert" (Picture 9). Select "Motion detection", input Receiver E-mail, Sender E-mail, SMTP user, SMTP password. Press OK to enable.



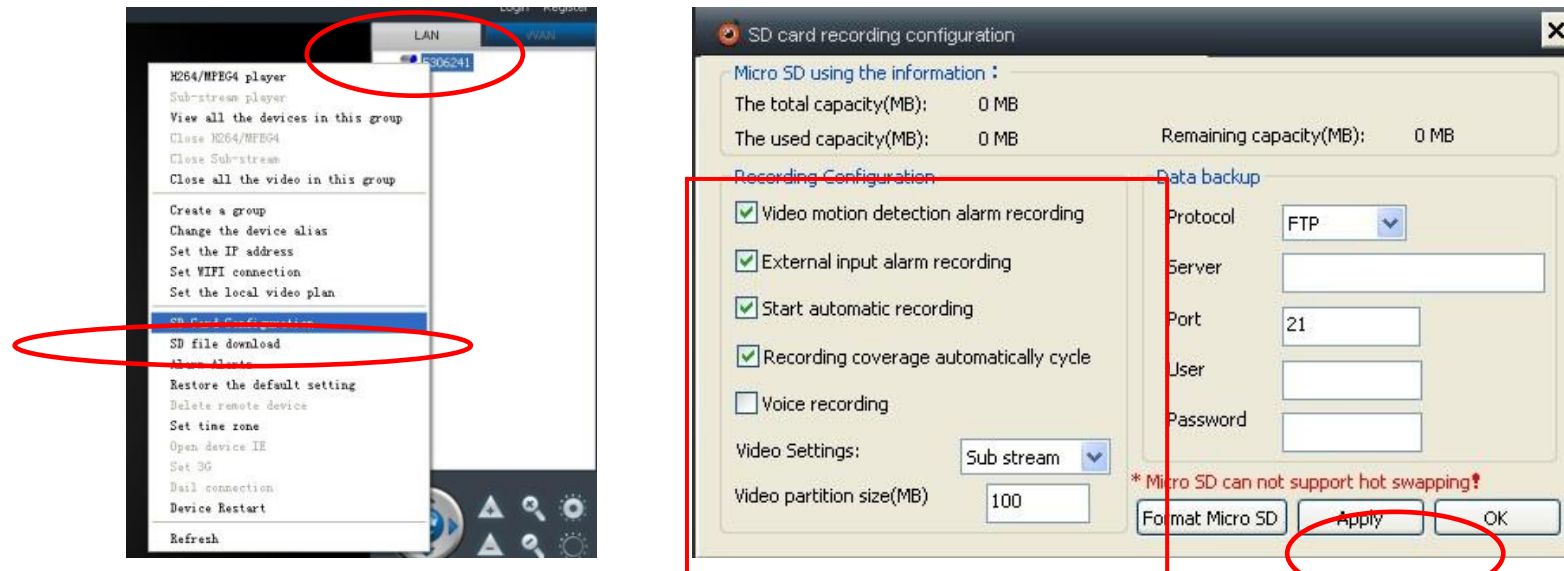
(Picture 9)



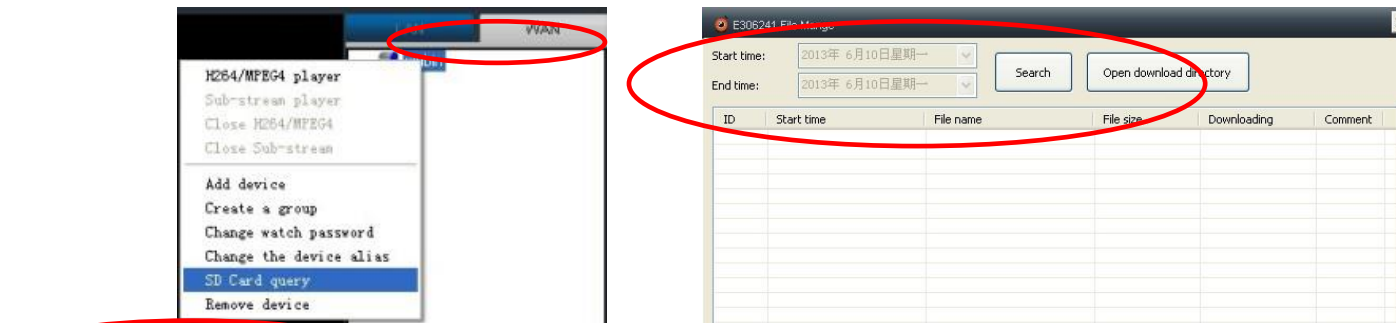
(Picture 10)

9. Micro SD Card Record and Playback (For models have SD record function only)

Enter software interface and click “LAN” button, right click the camera icon and select “SD Card Configuration”. Select “Video motion detection alarm recording” or “External input alarm recording” and press “Apply” button to enable.



Enter software interface and click “WAN” button and input user name and password and login from Internet. Right click the camera icon and select “SD Card query” (Picture 13). Select the “Start time” and “End time” and press “Search” button find recorded files in the SD card. And



In all cases, for more details, please refer to the electronic user manual on the CD. **Thank you!**

COUNTRY OF ORIGIN: CHINA

IMPORTER / DISTRIBUTOR: GLOBAL EXPORT – IMPORT LTD.

<http://www.global-export-import.eu>